

SONY

UP-GR700 Digital Photo Printer



SONY

You shot it, why not print it? The UP-GR700 is a print lab in your studio. This new digital photo printer is tailor-made for portrait photographers looking for an immediate and simple way to increase productivity, image quality and profitability.

Eliminate your dependence on printing labs. Make lab-related issues such as delays, peak season cut-off dates or unpredictable results a thing of the past. The UP-GR700 prints pro-quality borderless portraits in two sizes: 8 x 10 and 8 x 12 inch. And it offers two different finishes. It is easy to integrate the printer into your studio and workflow, so you can please more people, more quickly.





Superior, longer-lasting prints

We believe that when printing colour photographs, there's nothing better than dye sublimation. That's why all of our professional photofinishing systems are built around this superior printing technology. The UP-GR700 outputs photo-quality prints on cost-effective self-laminating media. This Sony media is aimed specifically at the professional portrait market, where your customers expect their prints to last forever.

Glossy & "Pro Matte" finishes

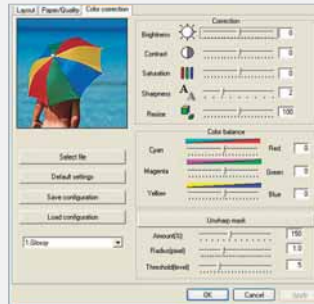
Sony has developed a unique laminating process that is used in the UP-GR700. It allows two types of surface finish - glossy and "Pro Matte" - from the same print pack. There's no need to switch paper or ribbon. Pro Matte is especially suited to fine quality portrait prints, because it is highly resistant to smudges and fingerprints.

Two print sizes

You can output two different sizes of prints from the UP-GR700: 8 x 10 inch and 8 x 12 inch borderless prints. There is no need to change print packs, so changing print format is completely hassle-free.



Copyright Acknowledgement



Compatible with Microsoft® Windows®



Useful Front Operation

High-speed printing

Whatever size or finish you're printing, the UP-GR700 prints it in under a minute. You can get a 10 x 10 inch print in 43 seconds and a 8 x 12 inch print in 58 seconds.

High-volume printing

The UP-GR700 holds a lot of paper, so you can keep your business rolling. The UP-GR700 holds a roll of print media that is good for 170 prints*.

*Or 150 prints if printing in 8 x 12 inch size.

Copyright acknowledgement

To help you, as a professional photographer, protect the copyright of your portraits, the phrase "Professional photos are protected by Copyright" is stamped on the reverse side of the prints.

Easy paper & ribbon replacement

The printer opens from the front. This makes it especially easy to replace both the paper roll and the ink ribbon. It also means that it can be set where space is tight, since you don't need to open it up from the side or rear.

USB connectivity

The UP-GR700 has a Hi-Speed USB (USB 2.0) interface, enabling images to be transferred to it extremely quickly from a PC.

Compatible with Windows®

The UP-GR700 is supplied with a printer driver for Microsoft Windows 2000 and XP Professional. This includes many useful features to maintain reliability and stability.

Memory for intelligent printing

The printer has an intelligent spool memory. This means that it can receive and process the next print job sent to it even while the current one is being printed. The result? Improved efficiency and productivity.

Specifications

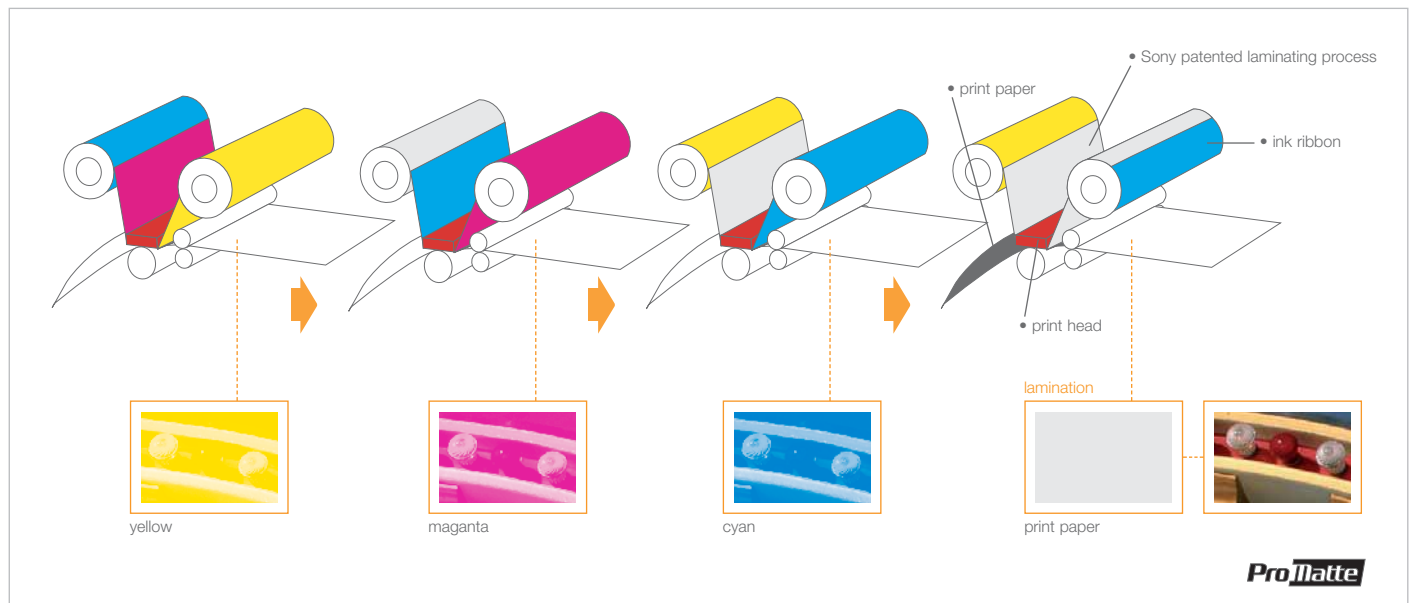
	UP-GR700
printing method	Dye sublimation thermal transfer
resolution	300 dpi
gradations	8 bits (256 levels) each for yellow, magenta and cyan
image data transferred	8 x 10 inch: 2444 x 3044 dots, 8 x 12 inch: 2444 x 3644 dots
print size	8 x 10 inch: (203 mm x 254 mm), 8 x 12 inch: (203 mm x 305 mm)
printable pixels	8 x 10 inch: 2400 x 3000 dots, 8 x 12 inch: 2400 x 3600 dots
printing time	8 x 10 inch: Glossy type: Approx. 43 seconds. Pro Matt type: Approx. 53 seconds. 8 x 12 inch: Glossy type: Approx. 48 seconds. Pro Matt type: Approx. 58 seconds.
media Capacity	8 x 10 inch: 170 sheets per roll, 8 x 12 inch: 150 sheets per roll
input connector	AC IN (for power supply)
interface	Hi-Speed USB (USB 2.0)
power requirements	AC 100 V to 240 V, 50/60 Hz
power consumption	3.0 A to 1.3 A
operating temperature	5 °C to 35 °C (41 °F to 95 °F)
operating humidity	20% to 80%
dimensions (w x h x d)	Approx. 370 x 400 x 350 mm (14 5/8 x 15 3/4 x 13 7/8 inches) (Including the maximum projecting parts)
mass	Approx. 30 kg (66 lb 12 oz) (including paper tray)
driver Software	Windows 2000/XP Professional
compliance	Safety : UL/cUL60950-1, EN60950-1 EMI: FCC Part15 Class A (US), Class B of EN55022 (CE)
supplied accessories	Power Cord (1) CD-ROM (1) Software License Agreement (1) Before Using this Printer (1) Warranty Booklet (1)

Colour printing packs



2UPC-R710
Self-Laminating Color Printing Pack
Contents:
2 rolls of print paper, 2 rolls of ink ribbon

Pro Matte Technology





www.sonybiz.net

©2007 Sony Corporation. All rights reserved.
Reproduction in whole or in part without written permission is prohibited.
Features and specifications are subject to change without notice.
All non-metric weights and measurements are approximate.
Sony is a registered trademark of Sony Corporation.
Print by Sony and Pro Matte are trademarks of Sony Corporation.
Microsoft and Windows are registered trademarks of Microsoft Corporation.
All other trademarks are the property of their respective owners.
CA UP-GR700/GB- / 07

SONY