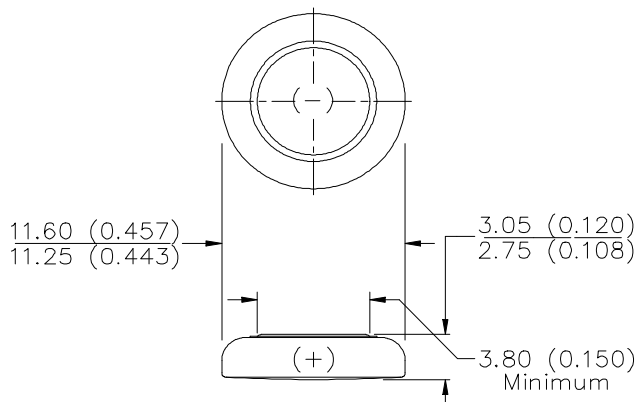


## ENERGIZER NO. 189



Industry Standard Dimensions in mm (inches)



**Chemical System:** Manganese Dioxide (MnO<sub>2</sub>)

**Designation:** IEC - LR54

**Battery Voltage:** 1.5 Volts

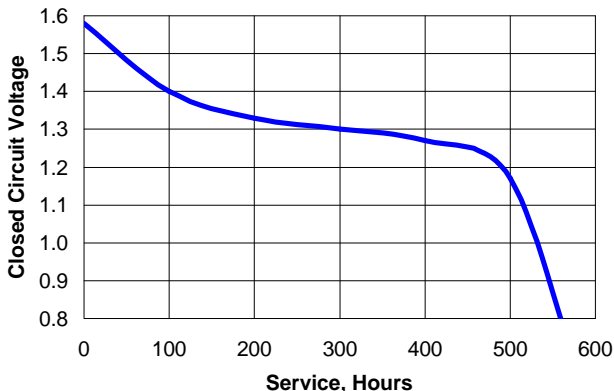
**Average Weight:** 1.0 grams (0.04 oz.)

**Volume:** 0.30 cubic centimeters (0.02 cubic inch)

**Average Capacity:** 48 mAh to 0.9 volts  
 (Rated at 15k ohms continuous at 21°C)

### TYPICAL DISCHARGE CURVE

Simulated Test @ 21°C (70°F)



### Simulated Application Test Estimated Average Service at 21°C (70°F)

Schedule:	Typical Drains at 1.25V (microamperes)	Load (ohms)	Cutoff Voltage
			0.9V
24 hours/day	83	15,000	555 Hours

**BULGE DATA:** This battery will bulge as it is discharged but will not exceed the maximum height shown on the battery drawing.

**INTERNAL RESISTANCE:** Typical closed circuit voltage during discharge on a load of 100 ohms for 0.10 to 2.0 seconds.

### Depth of Discharge as Percent of Rated Capacity

Temperature	0%	40%	80%
21°C (70°F)	1.50V	1.22V	1.02V

### Important Notice

This data sheet contains information specific to batteries manufactured at the time of its publication.

**Contents herein do not constitute a warranty.**

Copyright © Eveready Battery Co. Inc. - All Rights Reserved